

Welcome to RWTH Aachen University



Higher Education in Germany

365 institutions of higher education

- 100 universities & comprehensive universities (21 technical universities)
- 6 colleges of education
- 16 colleges of theology
- 52 colleges of art
- 162 general universities of applied sciences
- 29 colleges of public administration

2.04 million students

- 72.7% at universities
- 7.3% at universities of applied sciences
- over 47.4 % were women



RWTH in Europe

RWTHAACHEN
UNIVERSITY



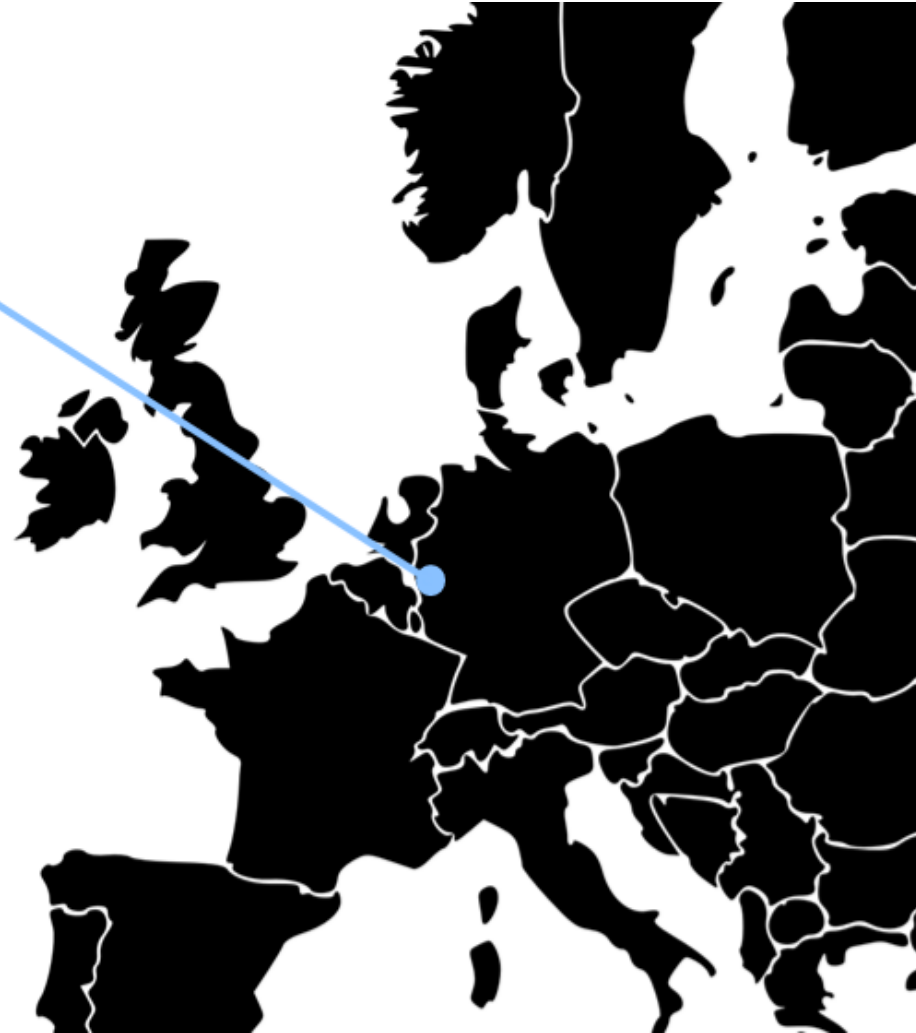
Aachen

260.000 inhabitants

45.000 students

Travel distance (by train):

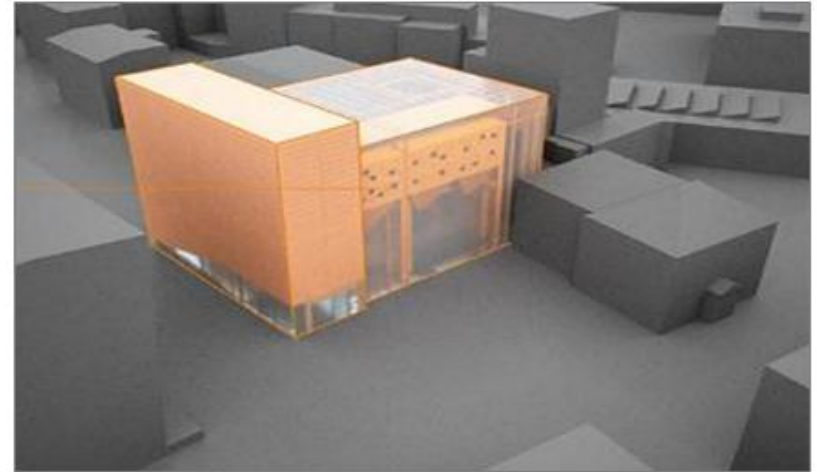
| | |
|--------------------|--------|
| Aachen – Brussels | 1:34 h |
| Aachen – Paris | 3:04 h |
| Aachen – Amsterdam | 3:20 h |
| Aachen – London | 4:19 h |
| Aachen – Berlin | 5.28 h |



RWTH Buildings



Future RWTH buildings



RWTH Aachen University: Key Figures



30260 students



5612 foreign students



436 professorships

RWTHAACHEN
UNIVERSITY



728 apprentices



2500 non-academic staff



260 institutes



3250 academic staff

Faculties and Departments

Faculty 1: Mathematics, Computer Sciences & Natural Sciences

Dept.: Mathematics
Dept.: Computer Science
Dept.: Physics
Dept.: Chemistry
Dept.: Biology

Faculty 2: Architecture

Faculty 3: Civil Engineering

Faculty 4: Mechanical Engineering

Faculty 5: Georesources & Materials Engineering

Dept.: Mining & Waste Management
Dept.: Metallurgy
Dept.: Geosciences

Faculty 6: Electrical Engineering & Information Technology

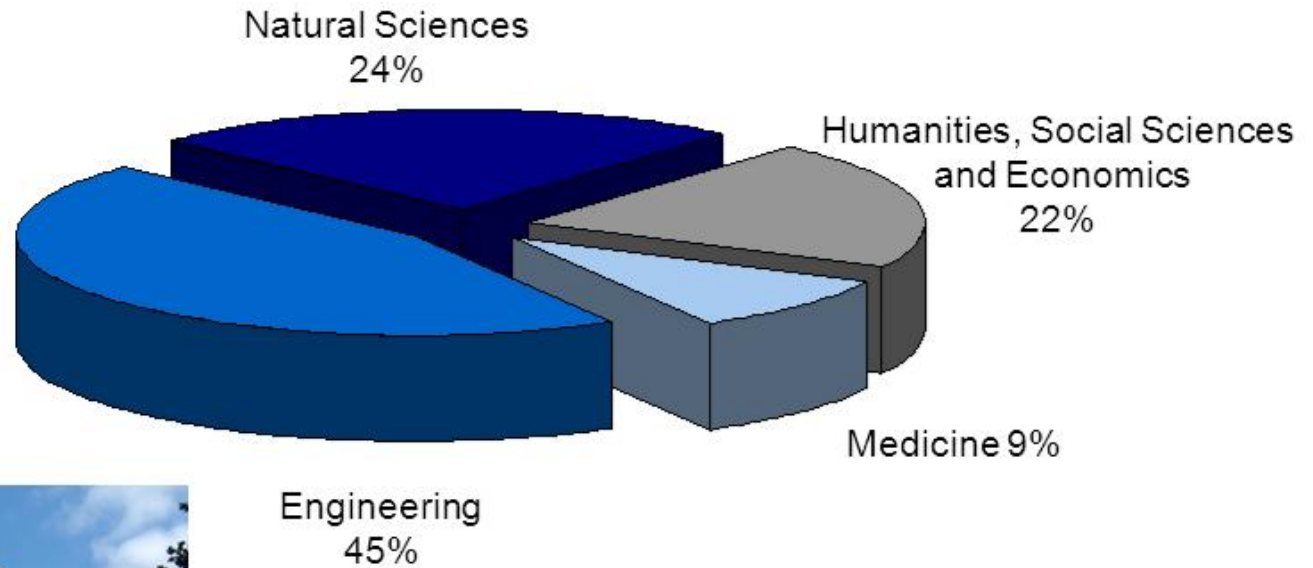
Engineering
Technology

Faculty 7: Arts and Humanities

Faculty 8: Business & Economics

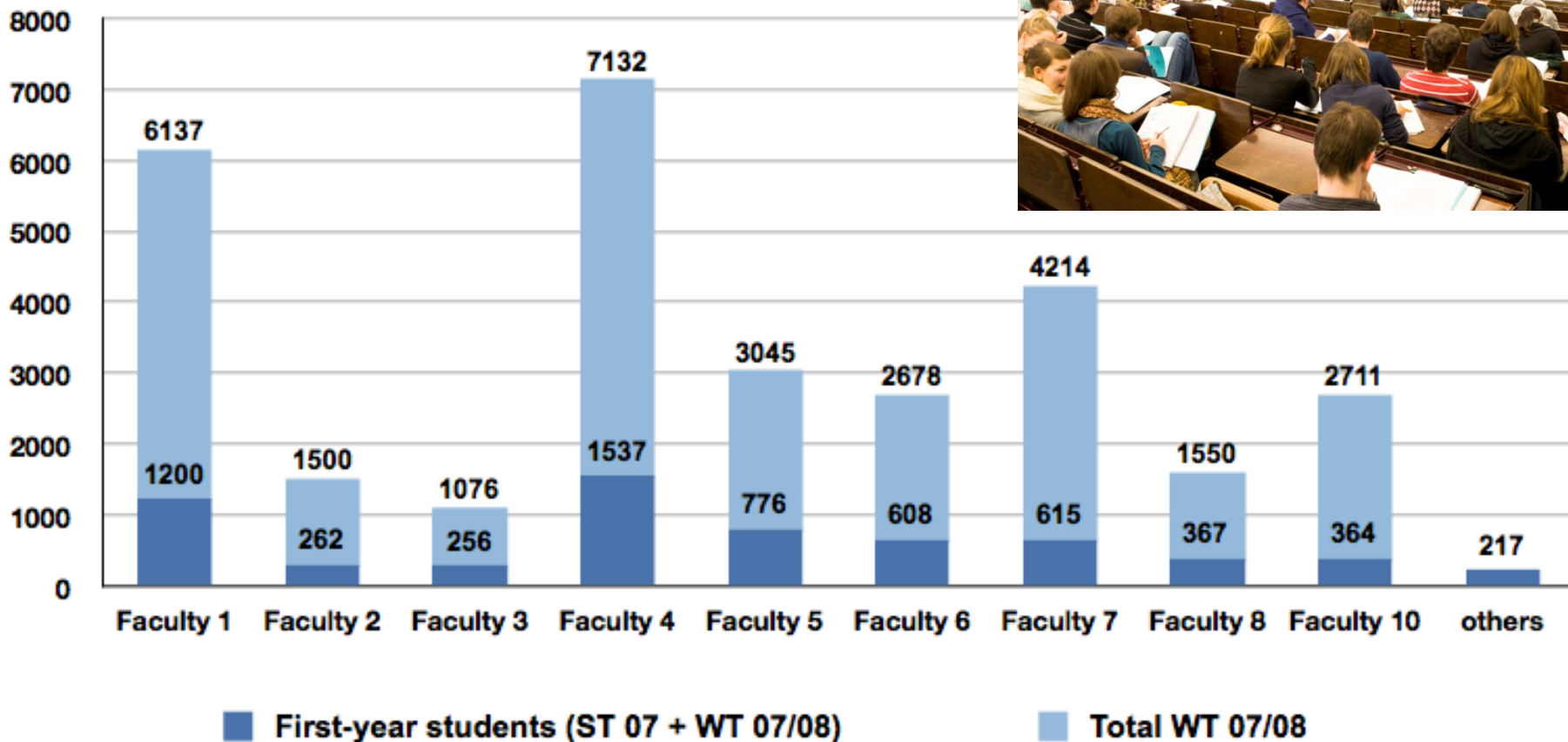
Faculty 10: Medicine

Students per Discipline

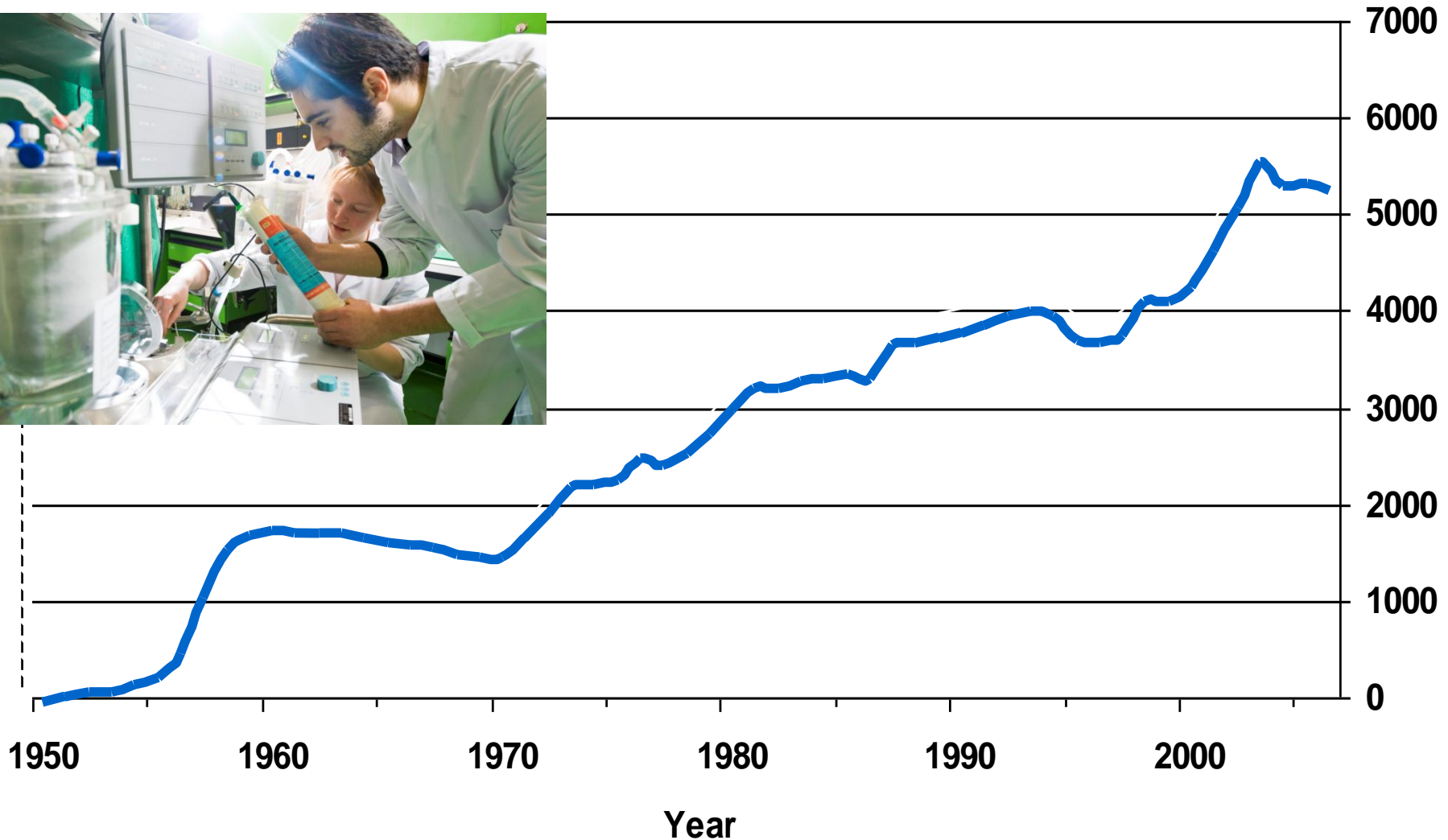


Total 30.260
(18% are foreign students)

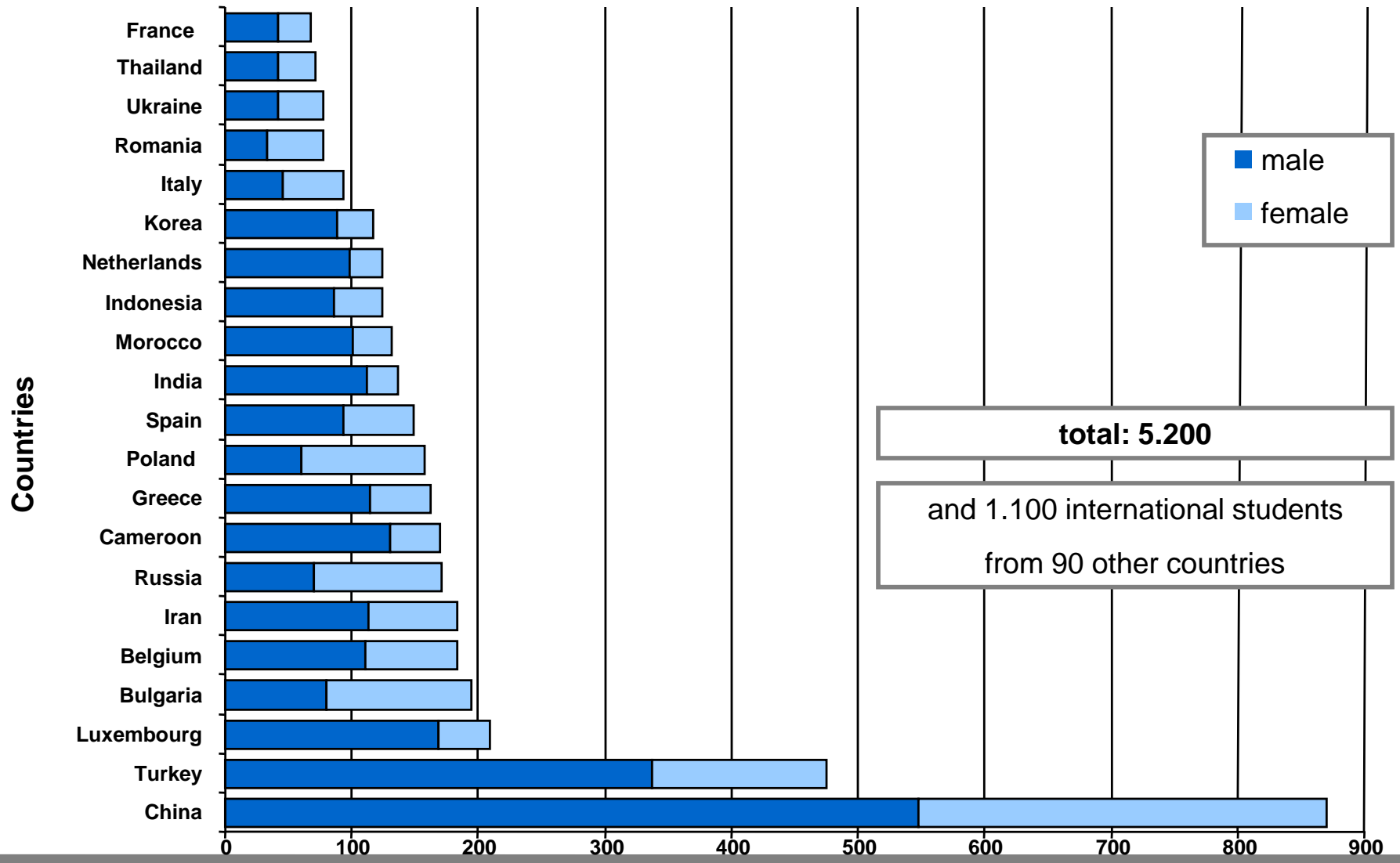
Students per Faculty



Number of international students



International students per country



Ranking results 2000-2007

WIRTSCHAFTSWOCHE

Engineering

Top Ranking (No. 1)

2000 - 2007

FOCUS

Mechanical Eng.

Top Ranking (No. 1)

2004 - 2007

DFG

No. 1:

1999 – 2001;

No. 2:

2002 - 2006

CAPITAL

Mechanical Eng.

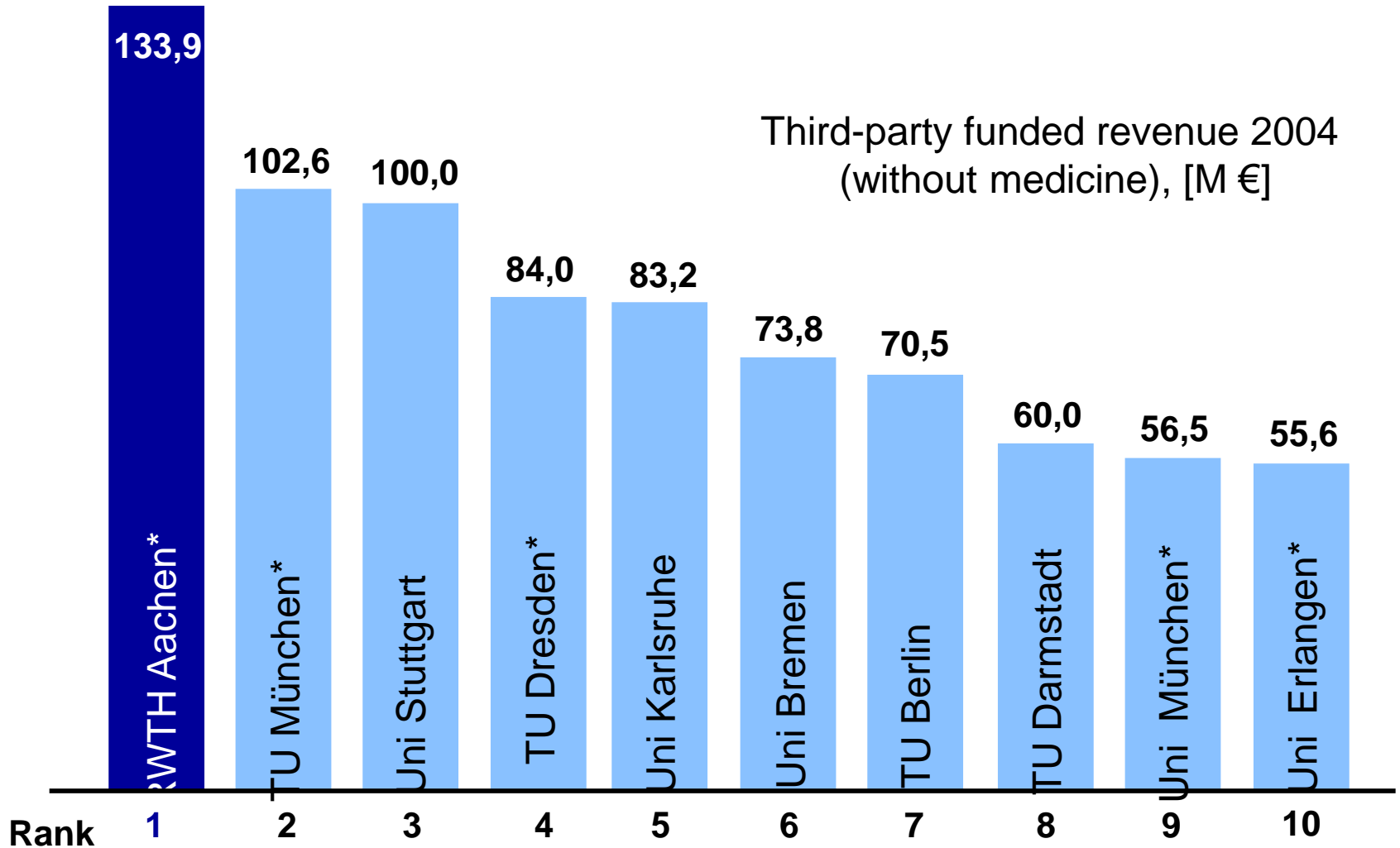
No. 1:

2003 - 2005

RWTHAACHEN
UNIVERSITY

- Excellent in engineering!

Research: Third-Party Funding, German TOP10



Source: Statistisches Bundesamt, October 2006

RWTH: Recognized by the Excellence Initiative

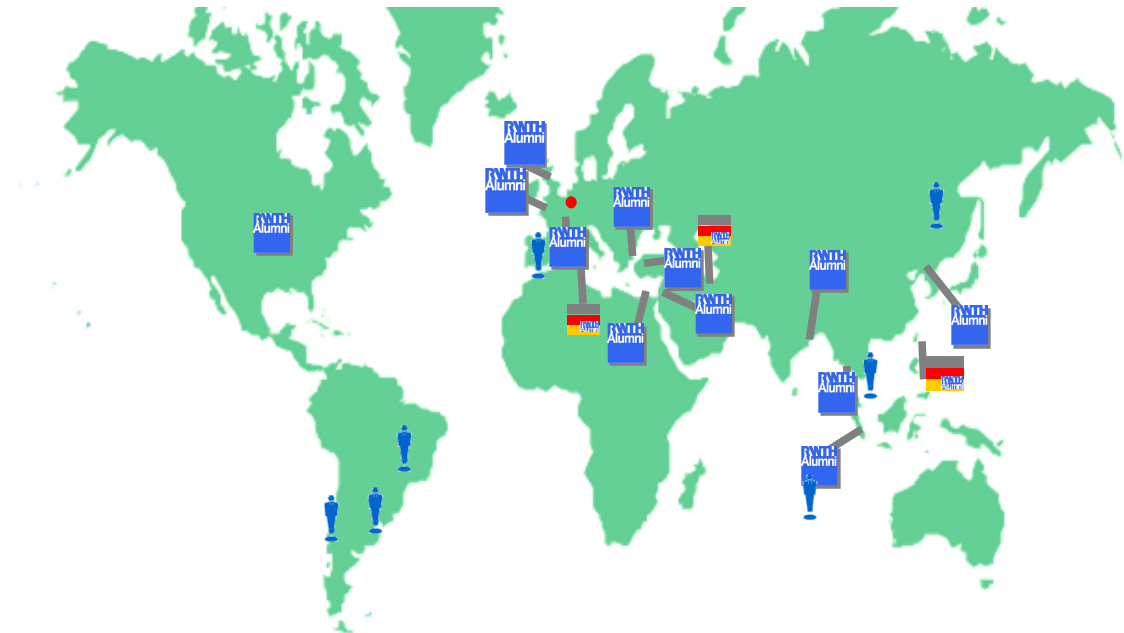


Worldwide Alumni Network

Alumni-Treffs



Alumni-Clubs



Contact Person



RWTH Club



Club with German Alumni

Undergraduate Programs

Engineering (B.Sc.)

Waste Management Engineering
Civil Engineering
Architecture
Mineral Resources Eng.
Georesources Management
Computational Engineering Science
Materials Science
Materials Eng.
Biotechnology
Electronic and Information Technology
Mechanical Engineering
Industrial Engineering

Natural Sciences (B.Sc.)

Chemistry
Biology
Physic
Applied Geosciences
Applied Geography
Mathematics
Computer Science

Economics and Social Sciences (B.A.)

Sociology
Business Management
National Economy & Economical History

Undergraduate Programs (ctd.)

Humanities (B.A.) (2 Majors in combination)

English Studies

German & General Literature Studies

History

Philosophy

Political Science

Linguistics and Communication Studies

Psychology

Medicine (state examination)

Medicine
(no B.Sc./M.Sc. system, study time 6 years)

Dentistry



Graduate Programs (Master)

One Major

Chemical Engineering
Energy Engineering
Automotive Systems Engineering
Production Engineering
Automation Engineering
Biotechnology
European Studies
Logopaedics
Materials Science
Mineral Resources Engineering
Psychology
Electrical Power Engineering
Metallurgical Engineering
Software Systems Engineering

Two Majors

English Studies
German and General Literature Studies
History
Philosophy
Political Science
Sociology
Linguistics and Communication Studies

Master's taught in English

English-taught Master programs

Biomedical Engineering

Communications Engineering

Media Informatics

Electrical Power Engineering

Metallurgical Engineering

Software Systems Engineering



PhD in Science/Engineering

Research in Co-operation with a scientific Supervisor (Doktorvater)

» no PhD „Program“

Candidates are often employed at the University (or in Industry)

Scientific Results worked up to a doctoral Thesis (Dissertation)

Duration: 3 to 5 Years



Selection of international applicants

Bachelor programs

Regular criteria used for admission to higher education programs in Germany (ZAB)

Minimum grade of 2.5 in the German system for all international students

DSH 2 / TestDaF 4x4

In some cases: previous internship required

Selection and admission: International Office

Selection of international applicants

Master's programs

formal qualification: International Office

minimum grade of 2.5 in undergraduate studies

DSH / TestDaF / TOEFL
(depending on the degree program)

functional qualification: faculties

Subjects studied in undergraduate studies

Individual grades

GRE / GMAT (where applicable)

Application procedure

Language Skills:

German (DSH, TestDaF, ...)
- for German study programs

English (TOEFL, IELTS, ...)
- for English-taught programs

Copy of certificates:

School Leaving Certificate

University Entrance
Examination Certificate

Copies of Transcripts

University Diploma

Curriculum Vitae

Statement of Motivation

Deadlines (Bachelor)

Non-restricted programs
- January, 15th (for winter-term)
- July, 15th (for next summer-term)

Restricted programs
- January, 15th (for summer-term)
- July, 15th (for winter-term)

Deadlines (Master)

Non-restricted programs
- March, 1st (for winter-term)

Restricted programs
- July, 15th (for winter-term)


**Online
Application**

International Office

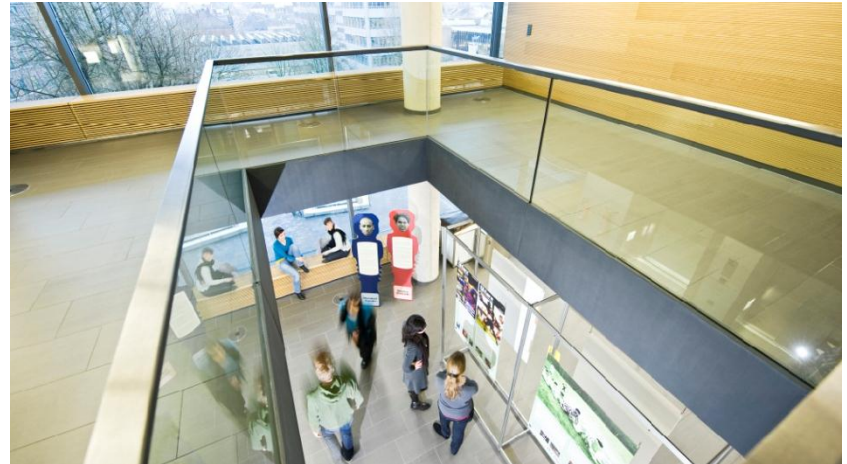
RWTH Aachen University's International Office:

- is organized in three divisions:

International Student Admission and Enrolment

International Student Services; Mobility (Asia, Africa, Latin America)

Mobility (Europe, North America, Australia, Japan, Korea)



- has several service units:

International Center of RWTH:
Humboldt-Haus

Info-Service-Center for international students and guest researchers

Liaison Office Beijing

International Office



RWTH Aachen University's International Office:

- is the university's service unit for international students, doctoral students, and guest researchers as well as for all RWTH students who want to go abroad as part of their studies

- offers advice, information and services concerning study abroad and assists international students who study in Aachen

- coordinates the university's international activities

- has 20 staff members plus 20 student workers

International Office - Activities

Activities - Leisure & Pleasure

We offer a cultural and social activity programme called „Leisure & Pleasure“.

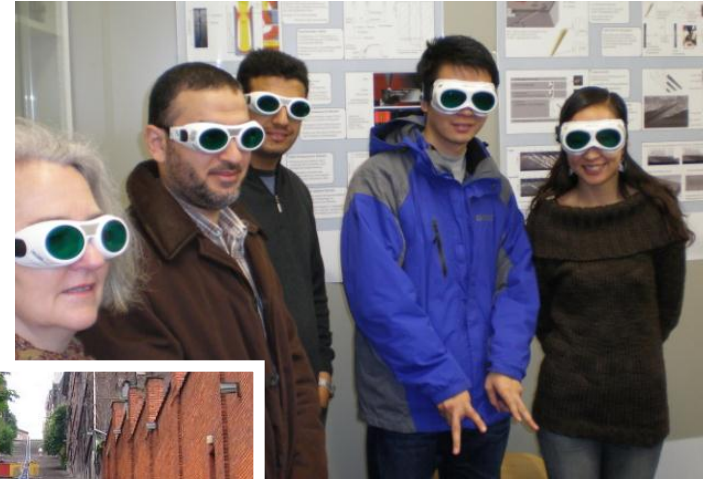
This consists of:

Excursions to interesting scientific facilities

Trips to nice regional spots

Social and cultural events

Check out our programme and get to know more people!



See you in Aachen!

Thank you for your attention!